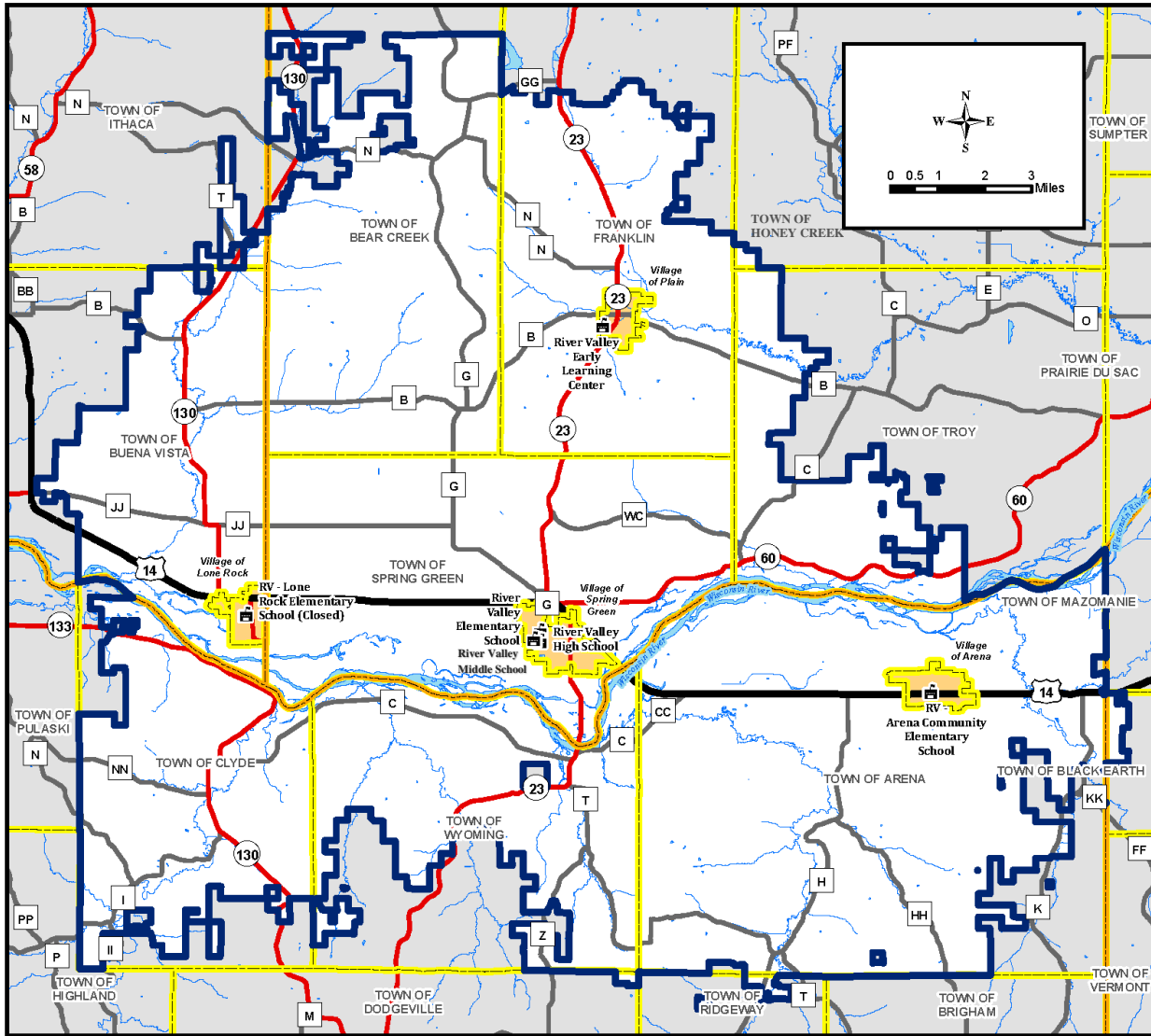




River Valley School District Strategic Plan 2023-2028

DISTRICT AT A GLANCE



Municipalities* (w/ 2022 population)

Village of Arena	877
Village of Lone Rock	830
Village of Plain	748
Village of Spring Green	1,597
Town of Arena	1,495
Town of Bear Creek	643
Town of Buena Vista	1,818
Town of Clyde	300
Town of Franklin	663
Town of Spring Green	1,835
Town of Wyoming	319

* Parts of some of the above listed towns are not in the RVSD area. RVSD area also includes small portions of the Towns of Ridgeway, Black Earth, Ithaca, Honey Creek, and Troy.

RVSD Area Facts

RVSD covers 298 square miles
 One of largest districts by land area in State
 Average Madison area district is 80 sq. mi.

Population density <40 persons/square mile
 Ave. Madison area district is >300/sq. mi.

Each of nine parts of the large RVSD area is represented by one School Board member

RVSD area offers a diverse mix of rural communities, natural areas, and the arts

Spring Green school campus includes 101 acres, including undeveloped land on its west end

RVSD Student Enrollment

Grade Groups ¹	2015-16	2020-21	2022-23	2025-26 ²	2030-31 ²
Grades 4K-5K	129	111	107	109	100
Grades 1-4	317	256	286	265	244
Grades 5-8	378	346	316	325	311
Grades 9-12	421	406	391	376	368
Total 4K-12	1,245	1,119	1,100	1,075	1,023

¹ The 2018-19 school year was the first in which grades 4K-5K were in the Early Learning Center, grades 1 through 4 were in River Valley Elementary, grades 5-8 were in the Middle School, and 9-12 were in the High School. The grade groupings in this table allow comparison across all reported years.

² Projected enrollment represent the “Kindergarten trend” model results from a February 2022 study of the UW-Madison Applied Population Laboratory for the River Valley School District.

RVSD Student Offerings and Achievements

Students’ average ACT score in Spring 2021 ranked the River Valley School District #3 in its conference and among southwestern Wisconsin (CESA 3) school districts.

District has offered all-day 4K programming since the 2013-14 school year—many districts that provide 4K only provide part-time programming.

District is a leader in the use of technology as an educational tool. Each 3rd through 12th grader has their own Chromebook for educational purposes. River Valley Television (RVTV) is in the top 2% nationally in use of this medium. Technology education and engineering students win numerous awards at the Skills USA competition.

High School offers advanced placement classes and dual credit classes from Madison College, Southwest Technical College, and UW-Platteville at Richland.

District middle and high school students have historically had high levels of co-curricular activity involvement. While negatively affected by the pandemic, participation rates are rebounding and a new stadium is expected to fuel a further increase.

Students consistently achieve at high levels in co-curricular activities, including the performing arts, band, FFA, forensics, math, mock trial, Skills USA, and sports.